



A Knowledge Base about evaluations of energy efficiency policies

Elisabeth Böck, Austrian Energy Agency

7th European Environmental Evaluators Network Forum

22nd November 2018, Brussels



This project has received funding from the European Union's Horizon 2020 Research and innovation programme under grant agreement No 746265.





*“Policies are living creatures and need to be adjusted periodically to take into account changes in context, markets, policy priorities, etc. A timely **evaluation** can provide the necessary basis for this”*

“The biggest difficulty is to justify the efforts (time and budget) needed to collect the energy-related data”

*“One may have fear to do an ex-post impact evaluation, because it may show smaller results than expected. However this increases the robustness of the results and therefore the **confidence** in the policy”*

“It was really worth the efforts needed to collect data and perform the evaluation”

“Empirical verifications represent a small budget compared to the whole budget of the scheme. Our experience with the ex-post impact evaluation is that it is really worth it”

Objective: creating favourable conditions for improving the number, quality/performance and effective use of ex-post impact evaluations of energy efficiency policies.

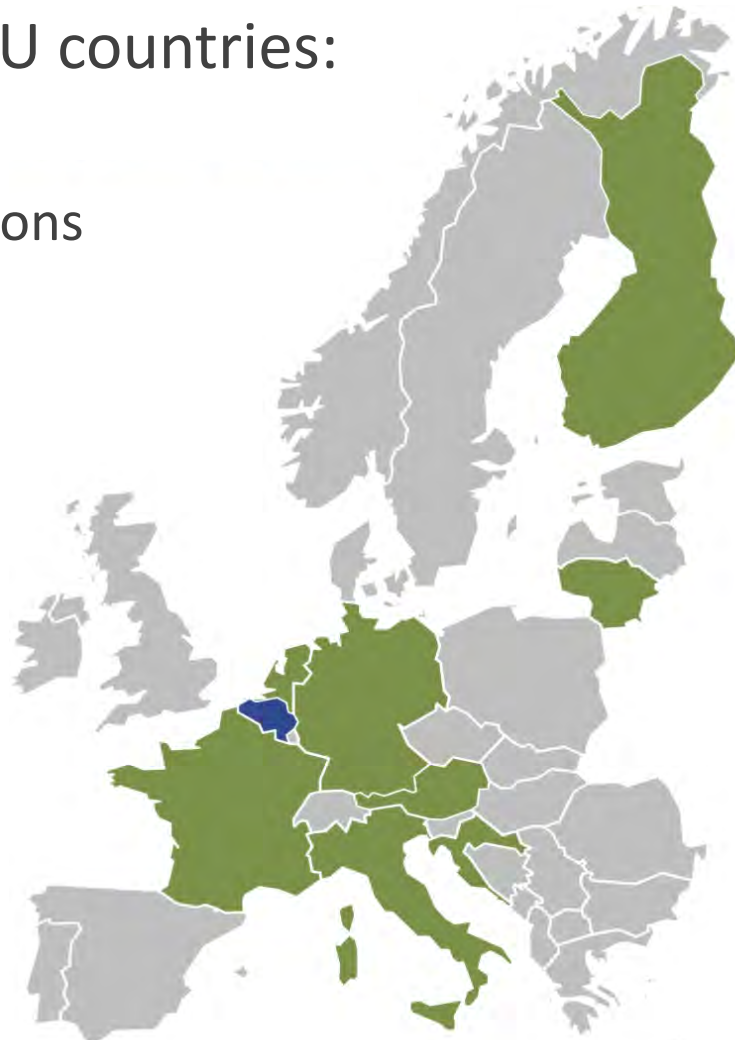
Concept: improving key stakeholders' evaluation practices can lead to a better understanding/knowledge of impacts and how policies work, and thereby to increasing effectiveness of policies





10 partners from 8 EU countries:

- ✓ public agencies
- ✓ professional associations
- ✓ research institutes



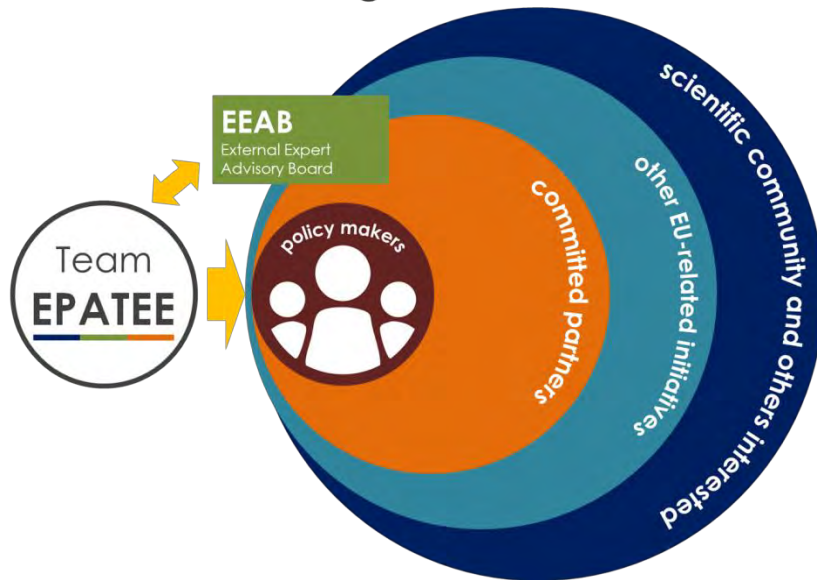
coordination

 AEA Österreichische Energieagentur - Austrian Energy Agency	 ADEME Agence de l'environnement et de la maîtrise de l'énergie
 ATEE Association Technique Energie Environnement	 ECN Energy research Centre of the Netherlands
 EIHP Energy Institute Hrvoje Pozar	 FIRE Italian Federation for Energy Efficiency
 FRAUNHOFER ISI Fraunhofer Institut für System- und Innovationsforschung	 IEECP Institute for European Energy & Climate Policy
 LEI Lithuanian Energy Institute	 MOTIVA OY Finland

<https://epatee.eu/>

Stakeholder involvement

EPATEE's coverage



- Interviews with key stakeholders
- Surveys on evaluation practices
- EU peer-learning workshops
- National peer-learning workshops
- Webinars
- Direct support
- EPATEE newsletter
<https://epatee.eu/subscribe-our-newsletter>



Building resources based on up-to-date knowledge and concrete experience feedback

Creating the conditions for an effective use of these resources

Knowledge Base

(user-oriented database of references)

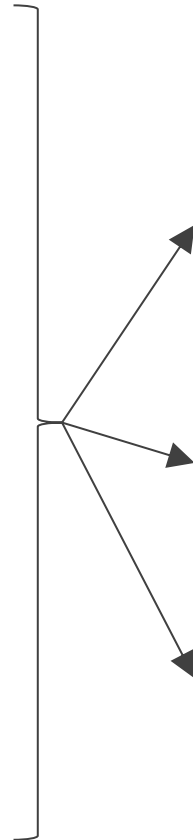


Guidance and support



Case studies

(about ex-post evaluations)



Online toolbox

making resources easy to use

Experience sharing

targeted workshops, webinars, etc.

Dissemination

of results



EPATEE's Knowledge Base



What is the Knowledge Base

Goal:

- facilitate access to evaluation studies
- provide concrete materials and information
- online access through EPATEE website

Collection of evaluation studies:

- evaluation reports
- evaluation papers
- evaluation guidelines
- meta evaluations
- methodological paper

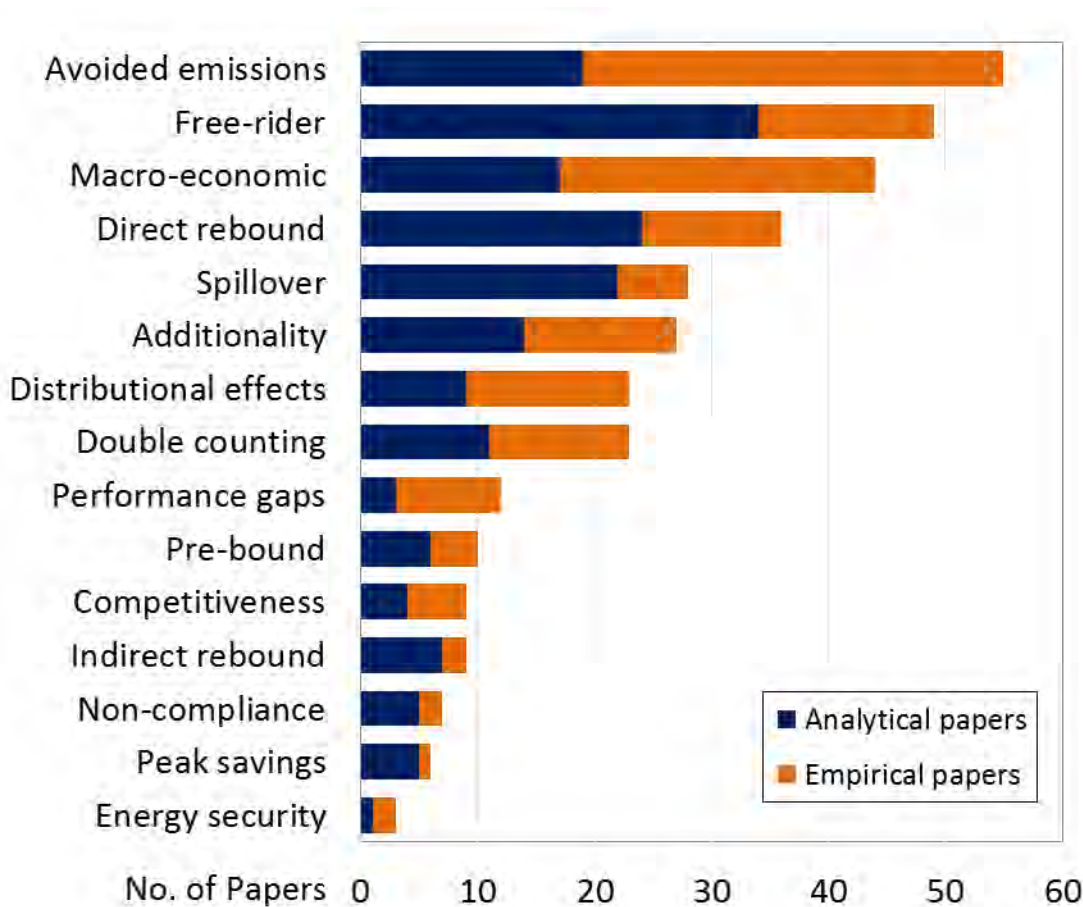
Search:

- by category
- advanced

Features:

- bibliographic information
- scope of the study
 - sector, country,
 - type of policy, study
- methodological aspects:
 - data collection
 - calculation methods
 - adjustment factors
 - energy savings & additional benefits

Knowledge Base's content



- More than 170 references
- Mostly ex-post impact evaluations (focus of EPATEE)
- empirical papers: evaluation reports and papers
- analytical papers: methodological papers, guidebooks and protocols



- Go to EPATEE website
- Go to RESULTS
- Click on „[Knowledge Base](#)“
- Select search by categories
- Select by indicated criteria
- Click on „SEARCH“

<https://epatee.eu/main-results>



Search by Categories

Year of publication
 1984
●
●
 2017

Language

Study type

Type of policy instrument

Sector

Geographical scope

▼ ADVANCED SEARCH

SEARCH
CLEAR ALL

<p>Project EPATEE A project to improve the Energy Efficiency policies, by improving their evaluation</p>	<p>Contact Fraunhofer Institute for Systems and Innovation Research ISI Competence Center Energy Policy and Energy Markets</p>	<p>Information on funding This project has received funding from the European Union's Horizon 2020 research and innovation programme under grant agreement No 746265.</p>
--	--	---

Your search returned 3 results

▼ REFINE SEARCH

➤ NEW SEARCH

France

English
2017

Impacts and cost-effectiveness of major energy efficiency policies for existing buildings: what do we exactly know and what can we learn?

Broc, Jean-Sébastien et al.
Study type: meta-evaluation
Geographical scope: EU

▼ MORE INFORMATION  SHOW DOCUMENT

UK

English
2016

Energy efficiency evaluation: the evidence for real energy savings from energy efficiency programmes in the households sector

Wade, Joanne and Eyre, Nick (UKERC)
Study type: meta-evaluation
Geographical scope: unspecified

▼ MORE INFORMATION  SHOW DOCUMENT

Denmark

Danish
2008

En vej til flere og billigere energibesparelser - Evaluering af samtlige danske energispareaktiviteter (Evaluation of all the Danish activities for energy savings)

EA Energianalyse et al.
Study type: evaluation report
Geographical scope: Denmark

▼ MORE INFORMATION  SHOW DOCUMENT



[✓ MORE INFORMATION](#)

[📄 SHOW DOCUMENT](#)

Type of policy legislative / normative	several
Type of policy legislative / information	mandatory labelling
Type of policy financial	several
Type of policy information / education	several
Type of policy cooperative	several
Type of policy market-based instruments	EEO
Sector addressed by policy Buildings	✓
Sector addressed by policy Household (other than buildings)	✓
Evaluation type Ex-ante	✓
Evaluation type Ex-post	✓
Evaluation type Bottom-up	✓
Evaluation type Top-down	✓
Objective of evaluation	combined

Data Collection	both
Calculation method	method 10
Baseline / counterfactual	multiple
Savings data presentation Gross	✓
Savings data presentation Net	✓
Normalisation factors Pre-bound effects	✓
Normalisation factors Direct rebound effect	✓
Normalisation factors Other	✓
Effect adjustments Free Rider effect	✓
Effect adjustments Spill over/multiplier effect	✓
Effect adjustments Indirect rebound effect	✓
Uncertainty analysis	✓
Other impacts Avoided CO2 emissions	✓

EPATEE's Case Studies





- Making information easily **accessible** & providing data as **transparent** as possible
- Analysing **concrete examples** about
 - **why** evaluation is used
 - **how** it is performed

NO INTENTION TO BE EXHAUSTIVE OR REPRESENTATIVE

Objective = covering a **diversity** of situations to produce **materials for experience sharing**





Short description of the measure

Key data about means and outputs

Data on energy savings

Details about the evaluation method(s)

Insights about other aspects monitored or evaluated

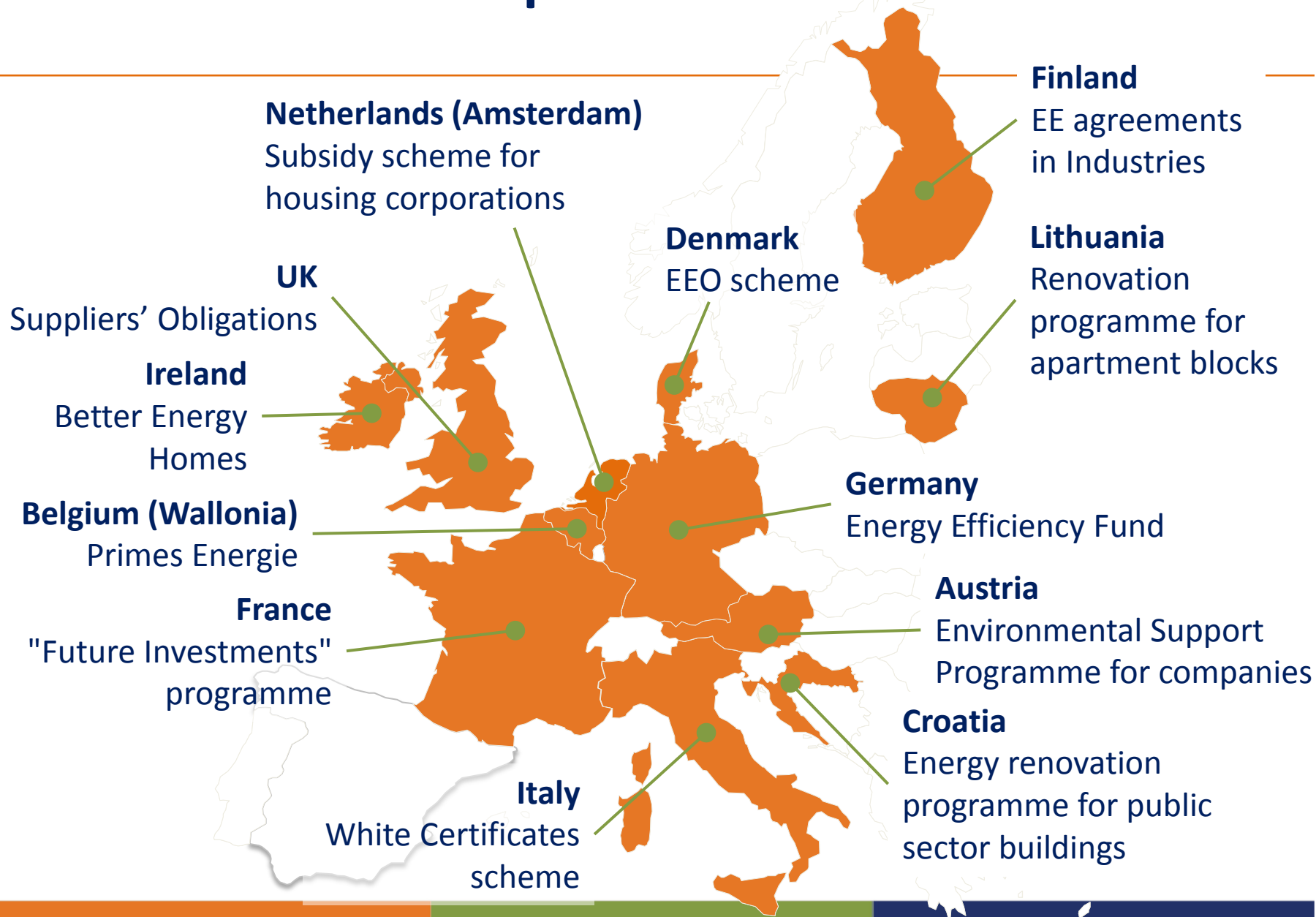
Focus on key evaluation issue(s) or practice(s)

+ interview(s) with the evaluation customer and/or evaluator

→ direct experience feedback

+ references

27 cases available at: <https://epatee.eu/case-studies>



Next steps





Online toolbox

making resources easy
to use

+ guidance on how to integrate evaluation into the
policy cycle

→ from early planning to evaluation use

Experience sharing

targeted workshops,
webinars, etc.

See: <https://epatee.eu/>

then “**events**” tab

Direct support

bilateral exchanges with public authorities/agencies
having specific needs or questions related to evaluation

→ contact@epatee.eu

+ create or improve conditions for a
community of experience/knowledge sharing

EPATEE Interactive online toolbox

Overall objective:

- Develop a smart online toolbox with information and guidance for practitioners on integrating evaluation practice in the policy cycle for energy efficiency policies.

Target groups

- Primarily policy makers and evaluators, who are not necessarily experts in the field of evaluations and/or energy efficiency

The online toolbox will offer

- General guidelines and ‘best practices’ examples on energy efficiency policy evaluation
- Guidance on logical steps of an evaluation
- Guidance on evaluation methodologies
- Guidance on different types of impacts
- Practical examples, with references
- do’s and don’ts
- per sector, per policy measure, in different countries
- Recommendations and support on energy efficiency policy design
- Further readings



Stay tuned with EPATEE's activities and results:

→ **Newsletter** : <https://epatee.eu/subscribe-our-newsletter>

→ **Twitter** : @epatee_eu; https://twitter.com/epatee_eu

To search the **Knowledge Base** or see the results from **stakeholders' surveys**: <https://epatee.eu/main-results>

Look at the **case studies**: <https://epatee.eu/case-studies>

Recordings of webinars: <https://epatee.eu/events-webinars>

Contact : Elisabeth Böck ; elisabeth.boeck@energyagency.at

Coordinator: Gregor Thenius ; coordinator@epatee.eu